

We are there for *you*



# LABOUR 22

MANIFESTO

## Labour's Guiding Principles

Labour's mandate is directed by its guiding principles for fair and democratic governance.

The democratic systems that safeguard the effective running of a country have broken down in Fiji. This has led to social and economic failures that have destabilised the country.

This would not happen under a Labour government.

-----

Our guiding principles are as follows:

- 1/ Recognition and protection of fundamental political and civil rights of citizens, freedom of expression and a just legal system
- 2/ Elimination of discrimination and exploitation on grounds of class, sex, religion, age and political affiliation
- 3/ Abolition of poverty and achievement of an equitable distribution of income, wealth and opportunities
- 4/ Provision and maintenance of full and meaningful employment
- 5/ Proper management of Fiji's resources, and protection of the environment
- 6/ Redistribution of political and economic power so that all members of society have the opportunity to participate in the institutions and processes which determine their lives
- 7/ Promotion of democratic socialisation of industry, production, distribution and exchange in order to eliminate anti-social exploitative practices
- 8/ Maintenance, creation of and support for a competitive, non-monopolistic private sector
- 9/ Encouragement and support for local small-scale businesses, farming and co-operative ventures
- 10/ Fostering a national identity for our people
- 11/ Recognition and encouragement of the right of labour to organise for the protection and advancement of its objectives
- 12/ Application of industrial democracy to increase opportunities for people to work in satisfying, healthy and humane conditions and to participate in and increase their control over decision making processes affecting them.

*“With humility and humanity, that is part of our living tradition, we must serve the people of the land”*

- Dr. Timoci Bavadra -

First Labour Prime Minister 1987

# Proven leadership to take Fiji forward

Dear Friends,

I know that for many of you, life is getting harder.

Keeping a roof over your head, putting decent food on the table for your family, and getting quality health care for your loved ones, has become a tough challenge.

People everywhere tell me that the cost of living is very high and that they are finding it difficult to make ends meet. The shocking truth is that over half our people either live in poverty or on the verge of it.

Our nation is over-burdened with debt, corruption is a serious problem, the economy is deeply troubled, there is mounting social distress. But equally serious is the blow inflicted on our national ethos and self-respect. We are now seen as a nation living off borrowed money.

Labour stood by you all these years making your voice heard on all matters that have made life difficult for you – the escalating cost of living, the fight for a fair national minimum wage, the assault on the basic rights of workers and so on ...

*Now we are ready to take on a new challenge to rebuild Fiji where everyone is treated fairly.*

WE are ready to tackle the root causes of poverty by empowering our people to live in dignity - earn fair wages, afford healthy nutritious food for your families, give your children a decent education, have access to affordable housing and quality health care.

WE want to see that our workers are treated fairly, that they have security of employment and that their jobs and rights are fully protected. We want to substantially reduce the high unemployment rate among our youth.

WE want all our people to feel that their freedom and rights are protected and secure and that they have access to fair opportunities.

WE want a government that is transparent and accountable to the people. We want to rid the nation of corruption and nepotism.

WE want Fiji to become a self-reliant nation with a robust economy.

*Labour stands before you with a proven record of 37 years of dedicated service to all the people of Fiji. The achievements of the Labour governments of 1987 and 1999 (short as they were) stand as true testimonies of our vision, and our ability to govern for the benefit of all. Our compassion and sensitivity to the needs of our people and our courage and determination to maintain course in the face of adversity, remain unmatched.*

Our 2022 Manifesto presents, once again, Labour's Vision for our nation.

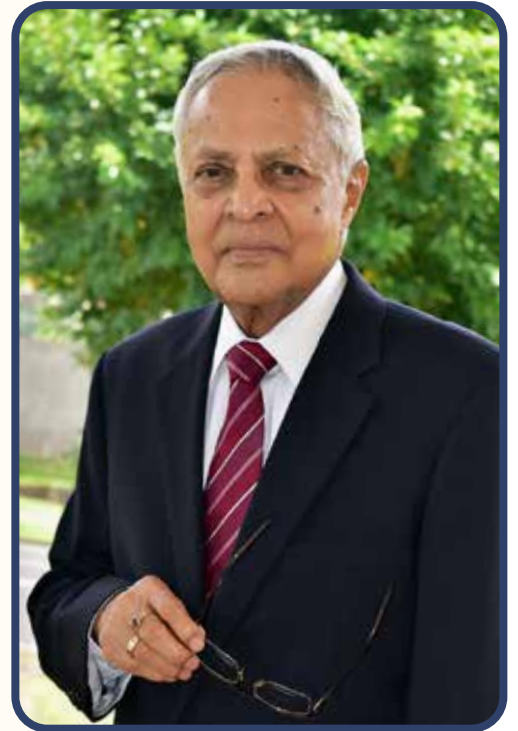
We have a dynamic set of policies to address the key challenges that confront us. Team Labour looks forward to meeting with you to explain these policies in the course of our campaign in the coming weeks.

A vote for Labour is a vote for a secure, prosperous and a more exciting future for you and your family.

God Bless Fiji



Mahendra Chaudhry  
Leader



# RESHAPING THE ECONOMY

We as a nation, just like households, **must learn to live within our means**. Right now in Fiji, economic growth is import-consumption based, debt-fuelled and inflation driven. GDP figures are more representative of the increase in prices rather than increase in productivity.

The country and individuals are consuming more than they produce and debt levels for both have dramatically risen. The increasing debt, alongside rising inflation and cost of living, could likely result in further devaluations of the Fijian Dollar which would make Fijians even poorer. In fact, Fiji could find itself in the same spiralling crisis as Sri Lanka.

To avoid this, we must import less and export more. As a first step in Labour's economic recovery, we will discourage non-essential imports. This will **reduce our trade deficit and support local producers and manufacturers** to increase our level of self-reliance, boost private sector growth and build local capacity.

Labour's economic recovery will **create meaningful production and lift the standard of living for all**. Those with the opportunity to go overseas will prefer to remain in Fiji and social issues such as poverty will be tackled.

**Foreign debt will be reduced under a Labour government as budget deficits will be funded from domestic sources**. An extensive costing of the policies outlined in this document has been carried out where budget deficits will fall within the capacity of the domestic market to lend to the government. **It is envisaged that a balanced budget will be possible within 3-5 years** by when domestic debt can also begin to be paid down.

*For more information go to [flp.org.fj](http://flp.org.fj) - Labour's alternate budget and manifesto supplementary document: 'Fiji First's Failed Economy'*



## THE OUTLOOK FOR INFRASTRUCTURE

Labour will consolidate under a **new Ministry of Infrastructure** all existing institutions to provide an integrated approach to development while allowing municipal councils the responsibility for the maintenance of urban roads, streetlights etc.

Labour will create a **public sector infrastructure enterprise** to develop local capacity to reduce our reliance on expensive overseas contractors.

Labour will invest in roads (with respect to maintenance and to ease traffic congestion), jetties, and bridges; renewable energy; water, sewage and sanitation; telecommunications (including digital); hospitals and schools, rural development, housing for the poor and agriculture

*For more info go to [flp.org.fj](http://flp.org.fj) - Labour's alternate budget & manifesto supplementary document: 'Overcoming Fiji's Infrastructure Deficit'*

## ELECTRICITY AND WATER FOR ALL

- The privatisation of EFL will be examined and a future plan for a government buy back actioned to **safeguard access to electricity** for all, **control excessive use and wastage** and ensure the **lowest price for energy** to the consumer

- The EFL subsidy, grid extension and house wiring scheme will continue

- WAF will continue to be well funded but also reviewed to understand and remedy its recent shortcomings to **secure the uninterrupted supply of water** to households all around Fiji

## TRANSPORT

- **review the operations of LTA** to ensure that it does not unnecessarily harass and penalise motorists, but rather assist them and help keep our roads safe

- **revise all fees and charges** levied by LTA to make them fair to motorists

- Undertake a **holistic study of the taxi and hire car industries** in consultation with industry stake holders to address such things as:

- ▶ base system
- ▶ issuance of permits
- ▶ grievances of contract drivers
- ▶ fare structure

- Labour will conduct an extensive national public transport review to determine ways in which the **public and private sectors can work together better to improve outcomes**, especially in rural areas

- **Fuel prices need to be stabilised:** Labour will investigate the current fuel price structure, distributor margins, introduce quarterly price review and look at setting up a fuel stabilisation fund to standardise fuel prices nationally and reduce domestic sea and air travel costs.

*Labour's economic recovery will involve the revival of the agricultural sector. This will strengthen domestic supply chains and safeguard food security while reversing urbanisation and rural poverty. Increased economic growth in agriculture will have to be sustainable and environmentally friendly.*

## NATIONAL AGRI-DISTRIBUTION INITIATIVE

- Increased funding and scope of Fiji Agro Marketing (AMA) and grants to independent distributors to collect **farm produce from ALL farmers** and distribute and market to all corners of the local market, making local food more accessible and cheaper (especially after climate events)
- Greater **farm level assistance**
- **Import duty** will be increased to support and guarantee livelihoods for farmers
- Boost manufacturing through increased funding for **Food Processors Fiji** and incentives for the private sector



## GREATER FOCUS ON LOCAL AND TOURISM MARKET, SURPLUS FOR EXPORT

Continued assistance to ALL current farming programs including Rice and Copra; increased **farm mechanisation and machine outsourcing** support; increase in grants and access to low interest loans for the **development of commercial agriculture and emerging crops**; study and pilot programs into **'all year round' farming and alternate crops**; and ongoing funding for R&D (crop, livestock & fisheries), nurseries and an extensive seed bank

## EMPHASIS ON MANUFACTURING & INFRASTRUCTURE TO BOOST OUTPUT

## SUSTAINABLE FISHING

- Priority to **preserve local fish stock**
- Emphasis on **import substitution** to boost livelihoods of local fishing industry
  - Fund the effective policing of our territorial waters to guard against poaching
  - Continued support for local aquaculture
  - Investment in infrastructure

## LIVESTOCK

Increase local capacity and self reliance and support local producers: **raise import duty** and encourage local producers to supply the domestic market; provide **subsidies to dairy farmers** (feed, medicine, pasture development and breeding); increase funding for disease control and veterinary; and review the Fiji Meat Act

## FORESTRY

Encourage **supply for local market**; continued **reforestation & conservation**; funding for nurseries for local hardwood (dakua, yaka etc)

*\* Terms of leases must be in consultation with landowners; Labour recommends a minimum of 50 years for agricultural leases for an increase in the rental from 6% to 10% of the Unimproved Capital Value (UCV). Government will pay the 4% difference in the case of local farmers.*

## REVERSING RURAL DECLINE

**LABOUR'S RETURN TO RURAL INITIATIVE WILL ADDRESS POVERTY, BOOST THE ECONOMY AND REDUCE THE STRAIN ON URBAN INFRASTRUCTURE**

### INFRASTRUCTURE & DEVELOPMENT

- Labour will invest in the **maintenance and upgrade of rural roads, bridges & agricultural infrastructure**
- Labour will allocate \$50m annually for **infrastructure development in Vanua Levu** and outer islands
- Improve postal and banking services for rural areas

### AGRICULTURAL ESTATES

- Labour will acquire land, prepare lots and build houses for **Agricultural Estates** (commercial farming lots) for eligible urban households to encourage their return to rural; grants and low interest loans (under govt guarantee) will be made available for those under this scheme to relocate, purchase their home and establish businesses

### RURAL 'HUBS'

Labour will construct rural service centres that provide administrative services, **commercial and market spaces, free Wi-Fi hotspots** and public communal areas and facilities

# GROWING THE PRIVATE SECTOR

## Low Interest BUSINESS LOANS for SMEs

Small businesses must have access to low interest loans in order for productive areas of the economy to be targeted.

The government will **guarantee the loans and support interest payments**

Unfortunately, under Fiji First, bank loans have been directed to the property market, import consumption and to large businesses. This has caused households to be inundated with debt and, alongside the devaluation of the dollar in 2009, is the main reason for the unprecedented rise in the cost of living. The dominance of large businesses has stifled competition, strangled smaller businesses and kept wages low.

For those **SMEs wanting to expand in productive areas of the economy** and employ youth and women

**3.99% CREDIT FACILITY UNDER GOVT GNTTEE**

For **innovative new SMEs** in productive areas of the economy and involving **youth and women entrepreneurs**

**REDUCE UNEMPLOYMENT**

### LOCAL MANUFACTURING

- Shift in emphasis from services to **manufacturing for import substitution** and export
- Shift from a reliance on foreign investment to supporting local innovation and entrepreneurship; FDI must be regulated to ensure it adds value to the economy

### IT DEVELOPMENT

The IT sector has great **export potential** and will be developed through construction of IT 'villages' and support for private sector investment.

- We need to **add value to the IT sector** and under Labour, Fiji will not be relegated to a mere Call Centre Nation

### FILM/TV AND MUSIC

Grants for artists to create more and better quality local content for domestic and export markets

- **Privatise FBC**

### TOURISM

*Support tourism in strategic ways to boost Fiji's attractiveness in the global market while increasing domestic competition*

- Reduce departure tax to land more people on our shores
- Remove excessive tax breaks to allow for a level playing field and greater competition
- Support **innovative ventures** (eco-tourism, farm stays, hill stations, health/medical tourism initiatives etc) with emphasis on **local small to medium business ownership**
- Public and private funded tourism development in Ra, Vanua Levu and historic & cultural destinations such as Levuka, Taveuni and Suva
- Continuation of marketing grant

### TAX REFORM

*Labour will:*

- ▶ Introduce a **progressive income tax structure** while continuing the \$30,000 tax threshold
- ▶ **Review tax holidays** and incentives to create a level playing field
- ▶ **Increase trade tax** on non-essential imports
- ▶ **Standardized corporate tax at 20%**
- ▶ **Reinstate Service Turnover Tax** to redress the imbalance between the services and other sectors of the economy
- ▶ **Widen Capital Gains Tax** on the sale and transfer of investment assets
- ▶ ensure **No VAT on basic food items** including baby food and medicines

### EASE of DOING BUSINESS

Labour will review fees, charges and licensing requirements applicable to small businesses and grant appropriate relief and incentives to encourage greater participation in this sector

Labour will redirect the Commerce Commission's oversight role to ensure fair competition practices rather than stifling businesses through over-regulation

**Action plan for capital markets** to better utilise domestic savings for investment

## ALL OUR CITIZENS, RICH OR POOR, DESERVE THE BEST HEALTH CARE

*There is mounting dissatisfaction with our Health Care services. The fault lies with the govt and not our nurses and doctors who have been working through trying conditions, under resourced and poorly paid. The FF govt in the past 15 years has lacked the political will to improve conditions. Labour will do the following:*

### PRIVATE SECTOR in HEALTH

Labour will access **specialist expertise & resources** for the management of hospitals to improve services and technology. Labour is not satisfied that the Aspen PPP model serves in the best interest of our people

### NATIONAL HEALTH INSURANCE SCHEME

A scheme similar to Australia's Medicare will be developed to **improve healthcare and make it accessible to all eligible Fijians**

### STAFFING

- **Doctors and nurses will be well remunerated;** salaries and allowances of health personnel will be increased to retain them in Fiji
- TELS reduced for students in healthcare to boost enrolments

### MEDICINES

**The stock of free medicines & consumables will be increased** at all our hospitals and health centres

### UPGRADE MEDICAL FACILITIES

**Upgrade all healthcare facilities** (including proper maintenance) and **improve equipment**

### AGED CARE

- **Review 'gaps' in aged care**
- Coordinate care between communities and institutions to improve services for seniors

### FIGHTING TOGETHER AGAINST NCDs

Labour will embark on a **vigorous and holistic campaign to fight NCDs**

Labour will:

- Mount **awareness** in schools, workplaces, communities and the media on the need for healthy lifestyles, diet and exercise; community leaders, sports and entertainment personalities will be active in these awareness campaigns.
- Widen Excise taxes to regulate supply of unhealthy foods
- Carry out an integrated approach to the distribution of healthy, cheaper **locally produced foods**
- Encourage local governments to provide attractive **green public spaces for exercise** and outdoor activities
- Boost funding for **mobile clinics to visit remote and rural communities** for regular health checks
- **Increase government subsidies for kidney dialysis treatment** in each district
- Create a **health databank** to coordinate information

Review gaps in **MENTAL HEALTH** understanding & treatment

## HOUSING FOR ALL (AFFORDABLE URBAN HOUSING PROJECT - AUHP)

**PROACTIVE GOVT INITIATIVE THAT PROVIDES QUALITY, CLIMATE RESILIENT & AFFORDABLE HOUSING FOR HARDWORKING FIJIANs**

### 3 STEP APPROACH TO AFFORDABLE HOUSING

- 1 - **FNPF savings plan** to raise the deposit for a new home
- 2 - Housing Authority will administer the **construction of affordable homes** through government funding - Houses will be sold at fixed prices at two levels: low income and middle/low income
- 3 - Commercial banks will provide **loans at 3% interest**

### MOVE UP IN THE WORLD

- **Urban squatter settlements will be a thing of the past** through affordable housing and freeing up PRB flats
- Labour does not believe in high-rise, ghetto style housing, rather 'liveable' neighbourhoods with parks and open spaces
- The supply of new and affordable housing will **reduce prices in the overall housing market**

Urban squatter settlement maintenance programmes will continue alongside the upgrade and development of rural and small-town squatter settlements; Labour will upgrade villages and proactively support the Model Towns Trust (housing for villages)

# EMPOWERING OUR WOMEN



## GENDER EQUALITY COMMISSION (GEC)

Labour will set up a Commission to:

- review existing legislation to **remove discrimination** against women and non binary genders and ensure that **new laws firmly represent all genders**;
- **deal with complaints** in relation to workplace discrimination;
- **work closely with NGOs** and engage on the ground with communities
- ensure that women in the formal and informal sectors are **paid their statutory wages**

## DOMESTIC VIOLENCE

Set up a **domestic violence & child exploitation task force** and engage a **'Violence Never'** campaign in the media and on the ground

## CORDINATED STATE ASSISTANCE

- **Increased support** (incl. financial) for single parents
- Government funded **community awareness programmes** against exploitation, trafficking and domestic violence; and support for victims

## DOMESTIC DISPUTE RESOLUTION

- **Family courts will be well resourced** to effectively deal with reported cases and to ensure compliance
- **Mediation services will be encouraged** as an alternative to the lengthy and adversarial court system

## WOMEN IN COMMERCE

Labour will strive to increase the **economic empowerment of women:**

- **Affordable credit** & govt guarantees for women in productive areas of the economy
  - extend the role of AMA for the distribution and marketing for such things as traditional craft products & floriculture and horticulture products for the domestic and export market and to tourist centres
- provide **education & training** on financial & business management through govt programs

**WOMEN ARE  
EQUAL PARTNERS  
WITH MEN & SHOULD  
PLAY A FULL AND ACTIVE  
ROLE IN THE POLITICAL,  
ECONOMIC, CULTURAL  
& SOCIAL LIFE  
OF FIJI**

## WOMEN'S HEALTH

Priority to fund resources to **support women's health**, in particular reproductive health including mammography, pap smears, ante and post-natal care & teenage pregnancy

*For more information go to [flp.org.fj](http://flp.org.fj) - Labour's manifesto supplementary document: 'Equality for Women'*

# INDIGENOUS RIGHTS & LAND

An integral part of Labour's policies is to advance agriculture and primary resource sectors and develop the rural areas; this will **improve the wellbeing of the Indigenous community**

Government programs will be set up to provide landowners with **ongoing guidance and support to protect their interests** and to **maximise the potential of their land resource**

Increase the maximum annual rental of agricultural land to 10% of the UCV to **better reflect the value of the land** with a negotiated 50 years minimum lease term and Government will pay the 4% difference in the case of local farmers

**Land utilization needs to be sustainable and productive** and follow traditional values of respect for mother nature

Reintroduce tertiary level scholarships for financially and geographically disadvantaged students which will **benefit i-Taukei students**

**Increase funding for Indigenous land development** and the iTaukei Institute of Language & Culture

*For more information go to [flp.org.fj](http://flp.org.fj) - Labour's manifesto supplementary document: 'Indigenous Empowerment'*



# EDUCATION

## TRANSITION INTO THE WORKFORCE

### *Reduce the burden of TELS and encourage hard work*

- Labour will set up a **new Ministry for Tertiary and Vocational Education** to oversee this sector
- **Reduce TELS by 50%** for those who complete courses in the prescribed term; this will be backdated for all outstanding TELS accounts
- Further **reduce TELS for courses in the national interest**
  - **Increased TELS eligibility** quota
  - Toppers to be supplemented with **scholarships for those financially and geographically disadvantaged** and for overseas post graduate studies
  - Labour's new 'National Services Scheme' will provide **employment** (while upskilling) on minimum wage for those who miss out on tertiary positions
- Grant for post graduate research and coordination with govt departments and the private sector to **boost innovation**
  - **Reinstate the USP grant**; review fees charged by tertiary institutions as a condition of their grants

## JOB CREATION

- **Low interest and government guaranteed loans for business expansion** that engage youth employment
- **Infrastructure projects** will target youth employment
- Youth will be directed to those tertiary level courses that **maximise employment possibilities**
- A **National Employment Office** to coordinate job vacancies

# YOUTH

## BETTER OUTCOMES FOR EDUCATION

There must be a **review of the entire education system** engaging such topics as:

- **improving the curriculum** which needs to be modern and progressive, involving music, sports, art etc and representative of an egalitarian society
- the **governance structure** for decision making, the delegation of responsibilities and how government grants are being utilised
- the possibility of **State funding for lunches**, uniforms etc for disadvantaged pupils
- **access to education** in terms of location, affordability and for people with disabilities
- secondary schools having the capacity to be **technical colleges** in regional areas
- **increasing wages** for education workers
- the provision and accessibility of **childcare**

## SPORTS, CULTURE & THE ARTS

- Labour will **establish a Fijian Academy of Sports, Art and Culture** to boost employment, training and participation of young people with specialized skills; enhance Fiji's brand and profile on the global stage
- **Sporting facilities and Youth Training Centres will be upgraded** and sports programs in schools and at community level implemented
- Labour believes that the **arts is vital for national identity** and unity; Labour will fund: 'Arts Alive International Festival' as an annual cultural celebration, Suva Art Gallery; Dance Theatre of Fiji; The Cultural Theatre of Fiji and provide grants to musicians and film makers

**INVOLVE THE VOICE OF YOUTH** by mobilising and **engaging youth** on issues such as government policy and the environment through funded national Youth Councils

## INTERNET AND ACCESS TO TECHNOLOGY

- Labour will prioritise the **development of digital infrastructure** to provide wider access to the internet ranging from **better digital services in rural areas** to **free Wi-Fi** at such public venues as markets, government buildings e.t.c.
- A Labour government will further adopt **digital technologies to increase the 'ease of doing business'** and **enhance access to government services**
- There will be continued funding for digital resources for schools

## YOUTH WITH SPECIAL NEEDS

Upgrade and improve resources for schools to **better cater for children with special needs**; and integration into the workforce

## STATE ASSISTANCE

Fee free education up to 18 years old and free bus fare for travel to and from school will continue

## BETTER SCHOOL ENVIRONMENT

- Labour will increase paid leave for teachers, review pay increases for education workers and carry out **civil service employment reform**
- **Funding for urgent school upgrades** will be available

# FAIRNESS & DEMOCRACY

**LABOUR POLICY IS DIRECTED AT 100% EMPLOYMENT WHILE SAFEGUARDING WORKERS' & UNION RIGHTS, A FAIR & DECENT WAGE FOR ALL AND WORKPLACE SAFETY & SECURITY**

## CIVIL SERVICE REFORM

- 1/ **Restore permanent employment** for all established civil service positions and abolish short term contracts
- 2/ **Review current pay structure** and service conditions; rectify anomalies
- 3/ De-politicise the civil service; **replace expatriates** & localize all senior executive positions
- 4/ **Review the Employment Relations Act** to provide for speedy resolution of labour disputes
- 5/ Provide appeal rights on promotions, transfers & disciplinary penalties
- 6/ Restore **retirement age to 60**



**Labour will establish the tripartite machinery by statute to ensure a consultative approach to labour relations**

## NON DISCRIMINATION

The rights of all persons in the workforce will be protected on the basis of inclusion, gender equality & non-discrimination

## OH&S

Labour will step up enforcement of OH&S regulations and practices in the workplace

## MINIMUM WAGE

The **current minimum wage is inadequate** (as is apprentice wage) and will be reviewed to take account of the cost of living

As the economy rebounds under a Labour govt, **minimum wage will rise** steadily while inflation stabilises

## FIJI NATIONAL PROVIDENT FUND (FNPF)

*Workers will not have their pension fund pillaged*

- Restore the **tripartite governance structure of FNPF** to allow representation of workers
- Revisit the 2012 reforms to ascertain its appropriateness in the current economic and social context
  - Labour shares FNPF's concerns about the current state of retirees' savings & benefits and will **restore the pension rate to 15%** and **reimburse \$180m** to the accounts of members forced to withdraw during Covid
- **Pensions will be periodically adjusted** to take into account the cost of living

## LAW AND FREEDOM

**The 2013 Constitution is deeply flawed** and conflicts with democratic and international norms on human rights and good governance. These must be reviewed.

Restore freedom of expression, association and assembly and **full capacity of the unions to fight for workers' rights**

**Re-establish media freedom** - review the Media Industry Development Decree to remove the harsh penalties and restrictions on media freedom

**Return autonomy and authority** to independent commissions and State institutions

**A separate courts system will be created for traffic offences** and petty crime to free up other areas of the court system

Enact comprehensive Code of Conduct & Freedom of Information legislation as a matter of priority to **provide open access to government information** and **curb corruption**

Labour will review current laws and practices relating to citizenship to **ensure that citizenship is genuinely granted**

Labour believes that **the armed forces must remain under the control of the government** exercised through the Cabinet and the Minister responsible

# WORKERS' RIGHTS

## ECONOMIC GROWTH MUST ALIGN WITH TRADITIONAL VALUES OF RESPECT FOR LAND AND SUSTAINABILITY

<p><b>Minimise fossil fuel use</b> through sugarcane production of ethanol to replace petrol (E10 petrol), bagasse to replace cooking gas and by reducing imports</p> <p><b>Boost renewable energy</b> through public, private and development partner investment in hydro, converting 'waste to energy' (including biogas); solar initiatives in urban areas and the continuation of providing solar to rural &amp; maritime areas</p>	<p><b>Reduce flooding</b> and redirect water by funding extensive drainage; dredging; desilting and irrigation works; and constructing and upgrading floodgates and dams.</p>	<p>Review the <b>environmental impact of mining</b> (incl. water)</p> <p>Prioritise the commercialisation of small &amp; medium scale diversified farms over large scale mono-crop farms to <b>retain moisture in the atmosphere and the natural balance of soils</b></p>
<p>Study the impact of <b>receding coastlines on coastal villages</b> and relocate them when necessary</p> <p>Labour will give priority to the <b>conservation of Fiji's rich and unique biodiversity</b> and be proactive in <b>safeguarding our coral reefs and mangroves</b> and ensuring the conservation of our marine resources</p>	<p>Carry out an urban <b>rubbish collection and recycling initiative</b> (phase 1)</p> <p><b>Large businesses</b> will carry out an annual environmental impact survey and pay a subsequent <b>environmental levy</b> in order to monitor and regulate their environmental footprint</p>	<p>Development of parks and open spaces and the establishment of <b>more 'liveable' towns and cities</b></p> <p>Invest in <b>National Parks &amp; gardens</b>, that regulate the environment, provide sanctuary to flora &amp; fauna (incl. protected and endangered species) and provide recreation to the public (incl. tourists)</p> <p>Labour will mobilise the Bio Security Authority to deal effectively with the growing scourge of <b>termites</b> and black ants. This is a major concern which has been ignored. A review will be conducted with respect to compensation for those affected</p>
<p>Study the impact of <b>vehicle and industrial pollution and fertilizers</b> on our environment and determine solutions</p>		<p>The strict compliance of <b>litter laws</b> will be upheld to keep our environment clean at all times</p>

**HUMAN & DRUG TRAFFICKING**  
Additional funding will be given to police and border force to step up measures to **combat human and drug trafficking**

**\$20m Disaster Relief Fund** for immediate relief for those affected by climate events. This will ensure that funds are at the ready for un foreseen disasters

Campaign against cruelty to **ANIMALS**, **National desexing program**, round up strays

Labour will **review fees, charges and business practices of Banks**, financial institutions, and insurance companies

**FOREIGN RELATIONS**  
Continue strong relationships with global partners and seek new engagements to **participate in mutually beneficial trade** and diplomacy BUT always with **strong belief in Fiji's sovereignty and self determination**

**OTHER ISSUES**

**DRUG CONSUMPTION (NARCOTICS)**  
Labour is greatly concerned about drugs in our society: **a report will be commissioned into drug related abuse**, mental health and the rising incidence of suicide; it will look at how mental health practitioners, social workers and police can coordinate their work to create better outcomes

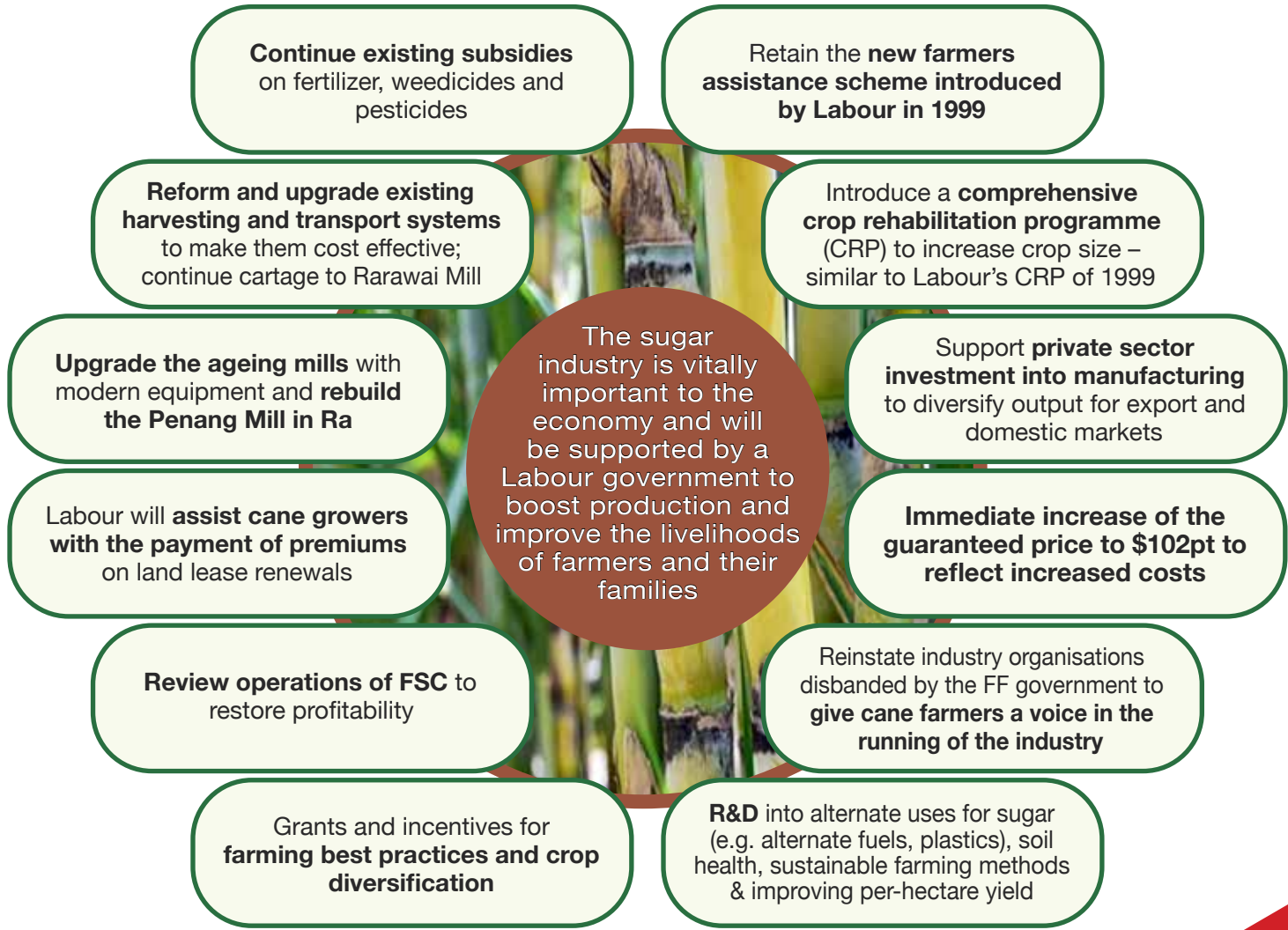
**COUNCIL ELECTIONS**  
**Bring back Municipal & Provincial council elections** to allow for better representation for, and accountability to, rate payers

**Reinstate the 102 FRCS staff and teachers** that were made redundant during Covid

**Work alongside NGOs** to better understand the needs of the interest groups they represent; coordinate public and/or private sector funding for deserving NGOs

**STATE OWNED ENTERPRISES (SOEs)**  
SOEs will be **strengthened and better regulated** to improve governance, efficiency and to modernise operations; SOEs will have to **provide financials on time**

# THE STRENGTH IN SUGAR



*Disclaimer: It is notified to all concerned that expenditure on the activities and projects mentioned herein will be funded from the Consolidated Fund through the government budgeting process and accounted for in all respects as per the requirements of the Finance Management Act. Authorised by: Mahendra Chaudhry, Secretary-General, Fiji Labour Party, 30 Varani Street, Suva. Paid for by the Fiji Labour Party*  
 Printed by: Total Designs, Lot 4 Baka Place, Nasinu - Tuesday 15th November, 2022

[www.flp.org.fj](http://www.flp.org.fj)  
 @Labour22